

## MightyLine™ Industrial Floor Tape Installation

**MightyLine is easy to install! Just peel and stick!**

MightyLine's high strength, double-coated tape features a removable pressure sensitive adhesive which offers an immediate quick stick application, yet allows for easy removal without leaving a residue.

### *WASH*

---



### *PEEL*

---



#### **GISBORNE**

P0 Box 1278 Gisborne 4010  
New Zealand

PHONE +64 6 281 0061

FAX +64 6 868 6175

EMAIL [info@inesco.co.nz](mailto:info@inesco.co.nz)

[www.inesco.co.nz](http://www.inesco.co.nz)

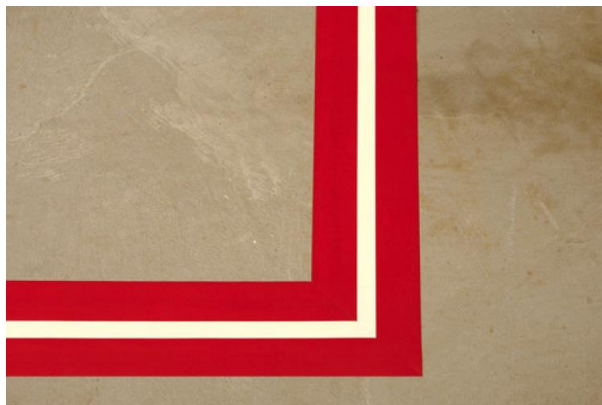
## *CUT*

---



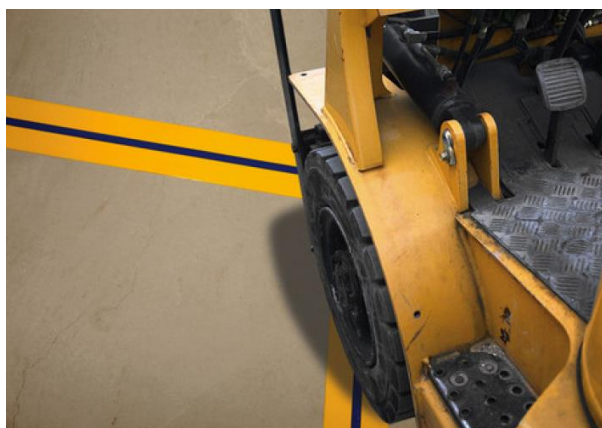
## *APPLY*

---



## *USE*

---



### **GISBORNE**

P0 Box 1278 Gisborne 4010  
New Zealand

PHONE +64 6 281 0061

FAX +64 6 868 6175

EMAIL [info@inesco.co.nz](mailto:info@inesco.co.nz)

[www.inesco.co.nz](http://www.inesco.co.nz)

## Floor Tape & Symbol Application Instructions

- Air and surface temperature must be at least 10°C.
- Surface must be completely dry.
- Surface must be clean and free of any contaminants which may include but not limited to oils, grease, sand, dirt, dust, loose aggregate, curing compound, mud, soil and salt.
- Do not apply product directly on seams, joints, deteriorating markings or substrates.
- Tapes applied directly over seams and joints must be cut through 5mm on both sides of the joints or seams to prevent de-bonding of the tape.
- Do not overlap tape, use butt splices.
- Firmly tamp the product in the same direction as it was applied, repeating until tape is completely confirmed to the surface.
- It is recommended that users test a small piece of product for satisfactory adhesion prior to installing large portions.
- To remove, place a small blade underneath the tape and pull the tape upwards whilst keeping it parallel to the surface.

For further information, see [www.inesco.co.nz](http://www.inesco.co.nz)

### GISBORNE

PO Box 1278 Gisborne 4010  
New Zealand

PHONE +64 6 281 0061

FAX +64 6 868 6175

EMAIL [info@inesco.co.nz](mailto:info@inesco.co.nz)

[www.inesco.co.nz](http://www.inesco.co.nz)